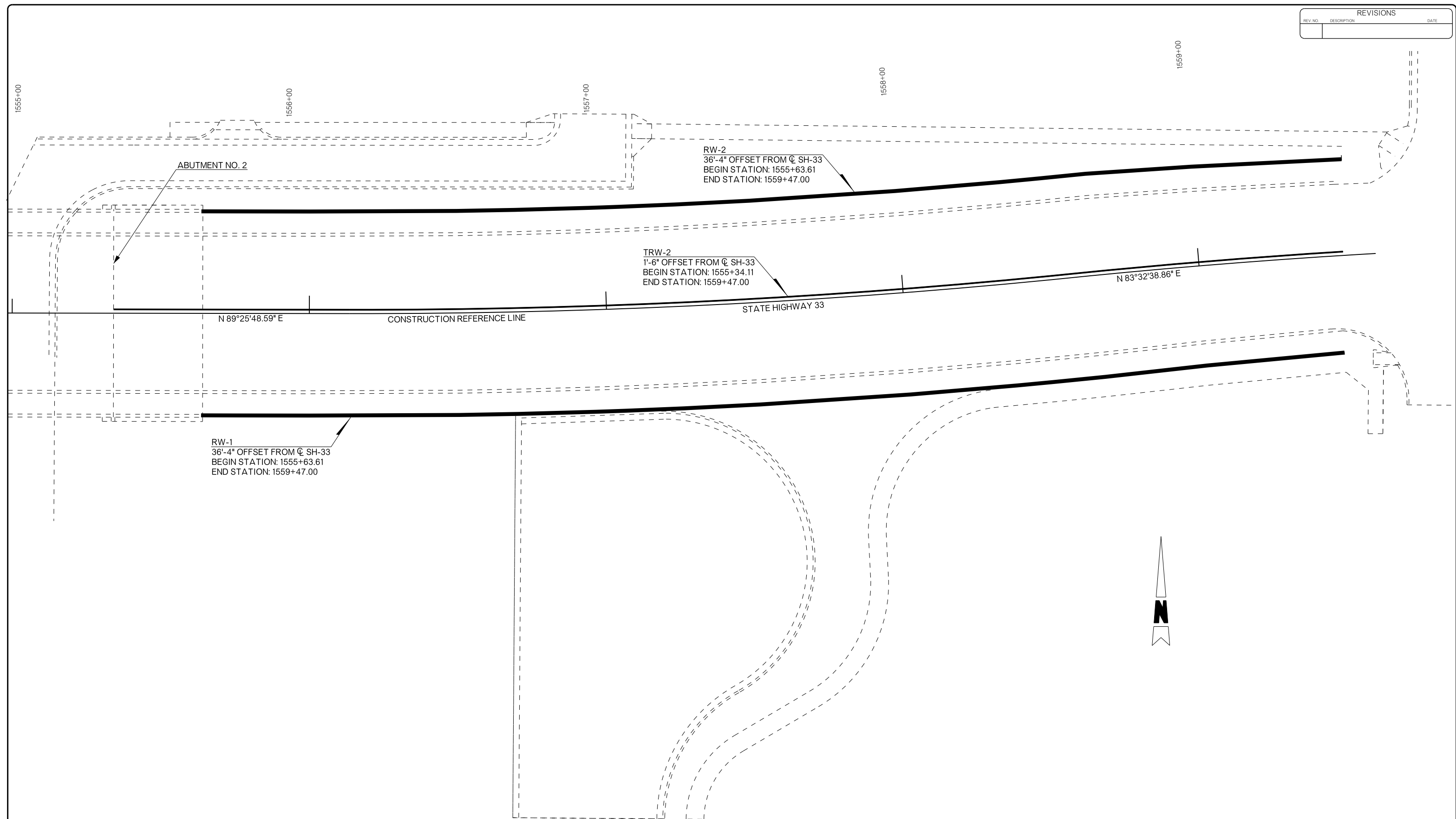


REVISIONS		
REV. NO.	DESCRIPTION	DATE



BRIDGE "A"		LOGAN COUNTY	
SH-33 OVER COTTONWOOD CREEK		Design	GT 11/15
GENERAL WALL PLAN (SHEET 2 OF 2)		Detail	MAP 11/15
		Check	JCH 11/15
Squad: PEARSON		Engr: HERNANDEZ	
STATE OF OKLAHOMA	DEPARTMENT OF TRANSPORTATION	JOB/PIECE NO. 21860(04)	SHEET NO. RW03